



PRODUCT OVERVIEW

# OnBase App Builder



DatumEvolve

[www.datumevolve.com](http://www.datumevolve.com)

# Features and Benefits

The revolutionary App Builder functionality introduced in the OnBase 23.1 release signifies a game-changing evolution in the OnBase user experience, emphasizing the crucial role of tailoring applications to user personas. This transformative approach ensures that users benefit from a more intuitive and personalized interaction with OnBase, as App Builder creates streamlined views specific to each user's role.

By allowing OnBase administrators to craft distinct applications based on individual personas and job functions, App Builder transcends traditional user interfaces. It redefines OnBase solutions as contemporary web applications, aligning seamlessly with users' terminology. This customization capability extends to content-centric applications, offering multiple layouts tailored to how users interact with the content.

## Key Benefits:

- **Enhanced User Experience:** App Builder delivers an intuitive interface that elevates the overall persona-based user experience, making interactions with OnBase easier and more enjoyable for users.
- **Increased Productivity:** Well-defined workflows within App Builder contribute to increased productivity by streamlining tasks and making them more efficient for users.
- **Cross-Platform Compatibility:** App Builder facilitates the creation of applications that work seamlessly across different platforms, ensuring users can access OnBase consistently.
- **Greater Customization:** Administrators gain greater customization capabilities, allowing them to incorporate design and functionality that align precisely with end-user requirements.

## Key Features:

- **Supported Sources:** Document types, forms, custom queries, custom folder queries, workflow queues, and reporting dashboards are among the supported sources.
- **Supported Actions:** App Builder supports various actions, including importing documents, creating Unity forms, opening custom URLs, navigating to sources, workflow ad-hoc tasks, and system tasks.
- **Cross-Browser Compatibility:** Chrome, Edge, Safari, and Firefox are all supported on both desktops and tablets.
- **Web Client Usability Enhancements:**
  - Theming Updates
  - Embedded Content Mode
  - Tablet Navigation and Gesture Support

# Persona-Based Applications

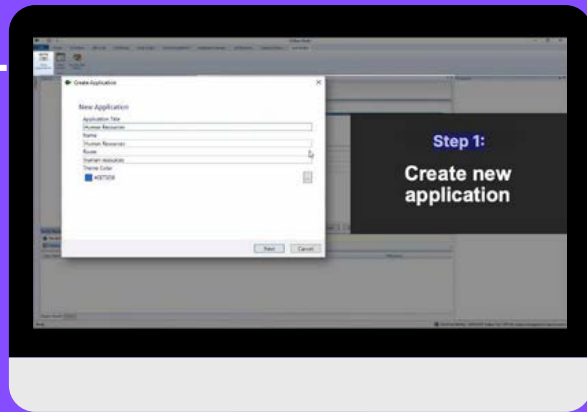
App Builder empowers organizations with a powerful tool to shape OnBase applications according to the unique needs and preferences of their users, fostering a more efficient, enjoyable, and productive user experience.



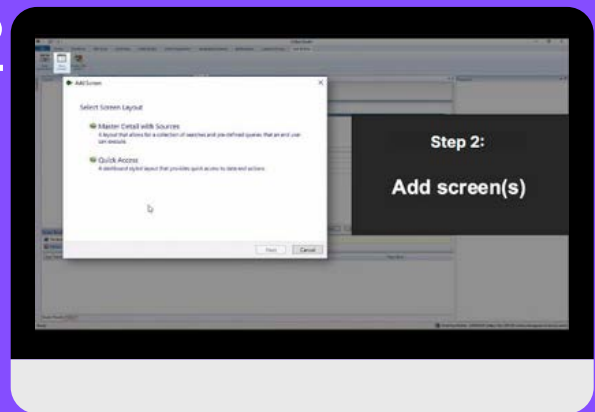
## OnBase Administrator

**Scenario:** Diane is tasked with producing a new HR employee file management solution to ensure that all new hire records are up to date. Diane can easily assemble the new app in four simple steps using OnBase App Builder

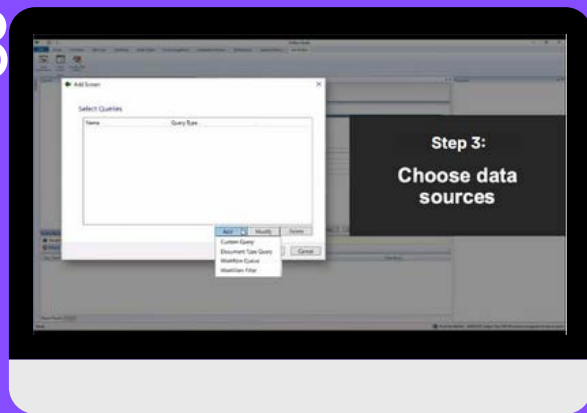
1



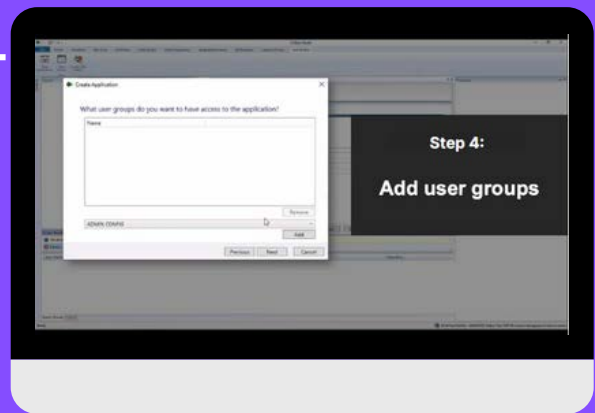
2



3



4



## HR Staff

HR staff members can now access the newly published human resources app to find employees with missing documents and ensure all documents are up to date for all new hires

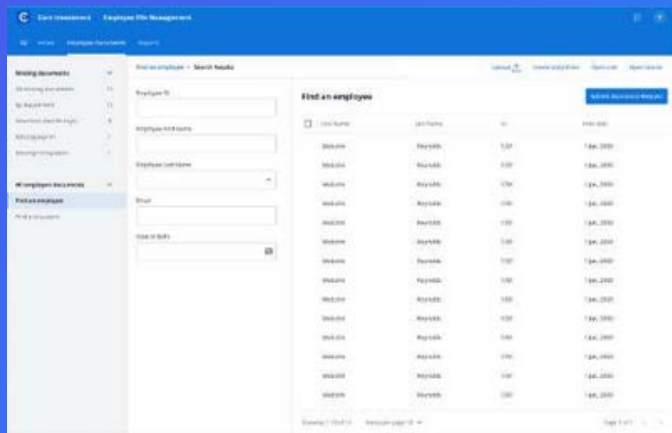
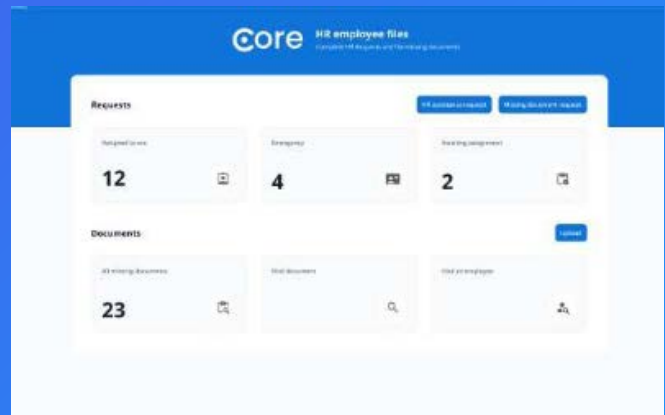
# Emphasis on User Experience

A modern software interface is essential for keeping up with user expectations, industry standards and technological advancements.

The OnBase App Builder is more than just improved colors, spacing and other stylistic elements. Users no longer need to learn OnBase terminology or see their functionality organized by module. Instead, users see language in their application that relates to the work they're doing, and their functionality will be organized by their use case.

## Quick-access Layout

Provides an overview of critical information and shortcuts to commonly used actions



## Master-detail Layout

Provides users a navigable list of data sources and a detail view for browsing content and taking actions

## Reporting Dashboards

Reports can be linked as data sources to provide relevant information in context

